



CubicMachinery.com

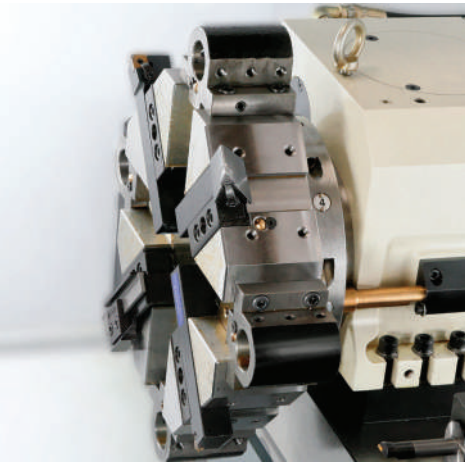


PLG Series

Designed for high production, raising the bar on capability.

GANG
TOOL

PLG Series



The PLG series lathe brings a new level of efficiency to high production turning processes. PLG series owes much of its success to the gang tooled design, which offers several important advantages:

- * Reduce job changeover time. Complete changeover can be accomplished in mere minutes by swapping the tool plate.
- * Improved tool change time, there's no time lost to indexing time like on turret based machines.
- * Gang tooling eliminates a source of inaccuracy as the tool plate has no moving parts compared to a tool turret.

FEATURES

Long Travels

PLG-42L, PLG-52 and PLG-60 have extra long 12.6" X-axis travel which allows more tools to be placed on the gang tool table. Additionally, PLG-52 and PLG-60 have 22.05" of Z-axis travel to accommodate longer parts and even special tooling.

Accuracy

The PLG-series lathes are built to exacting quality standard. They should hold positional accuracy of 0.0001".

Chuck Sizes

PLG-42 and PLG-42L have A2-5 spindle nose which accepts 6" hydraulic chuck. While both PLG-52 and PLG-60 both use A2-6 spindle nose, PLG-52 uses 8" chuck and PLG-60 uses 10" chuck due to the difference in motor rating.

Bar Capacity

1.65" (42mm), 2.05" (52mm), 3" (78mm)
inch bar capacity

Gang Tooling with Optional Turret

PLG series CNC lathes can be factory built with either gang tool table alone or with a combination of gang tool table and a turret. The turret is hydraulically driven and allows 8 more tools to be used on the same machine.

Parts Catcher

To reduce operator part handling, PLG series lathes can be ordered with parts catcher. The parts catcher accepts parts that have been parted off at the spindle and loads them onto a parts conveyor. The conveyor moves finished parts to the exterior of the machine.



STANDARD EQUIPMENT

Power and Efficiency

- FANUC 0iMate coolantool
- FANUC servo motors
- FANUC Manual Guide Oi
- Hydraulic pump unit for chuck activation
- Automatic lubrication for sliding ways
- Rigid cast iron base

Tooling

- Gang tool plate
- Removable sub-plate
- ID tool holders (3)
- OD/Cut off tool holders (2)
- Tool holder bushings (1 set)

Time Saving Automation

- Bar feed interface (FEDEK DH-65 series)

Productivity & Convenience

- High resolution LCD display
- Program transfer using PC card on front panel
- RS-232 serial interface for program uploads
- Halogen work light with adjustable arm
- 2 color LED signal light tower

Coolant, Chip & Thermal Management

- Programmable coolant system
- Coolant level indicator with temperature gauge
- Chip pan with pull out handle
- Dedicated heat exchanger for electronic cabinet

Safety, Service & Diagnostic

- Electrical cabinet locks
- Easy access service panels
- Toolkit and toolbox

OPTIONAL EQUIPMENT

Workholding

- Spindle 5 degree indexing
- Hydraulic chuck :
6" (PLG-42, PLG-42L, PLG-42XL),
8" (PLG-52), 10" (PLG-60)
- Collet chuck: 5C/16C (PLG-42, PLG-42L),
S20 (PLG-52), S30 (PLG-60)
- Tailstock with programmable quill (PLG-52, PLG-60)

Tooling

- 8-Station turret (PLG-42, PLG-42L, PLG-52, PLG-60)
- 3/8", 1/2" or 3/4" center height Hardinge-style tooling
- Live tool package

Productivity & Convenience

- Foot switch to activate collet or chuck opening/closing
- Parts catcher and parts conveyor

Time Saving Automation

- Magazine-style short bar feeder
- 12 ft bar feeder
- Bar extension
- Automatic door
- Gantry loader

Coolant, Chip & Thermal Management

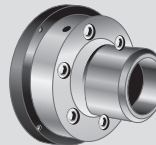
- On-table coolant delivery
- Stainless steel high pressure coolant nozzles
- Chip conveyor (belt-type) and chip cart
- Mist collector
- Coolant chiller

Safety, Service & Diagnostic

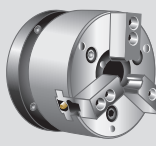
- Front door interlock
- CE mark



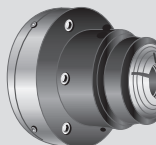
Short-Nose 5C Collet Chuck



Short-Nose 16C Collet Chuck



3-Jaw Power Chuck



S20/S30 Collet Chuck

**PLG series with automated loaders
custom designed
to fit customer's needs**



Chip Conveyor



Bar Feeder



Mist Filter

SPECIFICATIONS

| | MODEL | PLG-42 | | PLG-42L | | PLG-52 | | PLG-60 | |
|-----------------|-----------------------------|------------------------------------|------------|------------------------------------|------------|-------------------------------------|------------|-------------------------------------|------------|
| Capacity | Max. turning diameter | 152 mm | 6 inch | 152 mm | 6 inch | 300mm | 12 inch | 380mm | 15 inch |
| | Swing over cross slide | 112 mm | 4.4 inch | 112 mm | 4.4 inch | 160mm | 6.3 inch | 160mm | 6.3 inch |
| | Cross slide travel (X-axis) | 230 mm | 9.05 inch | 305 mm | 12 inch | 320mm | 12.60 inch | 320mm | 12.60 inch |
| | Carriage travel (Z-axis) | 300 mm | 11.81 inch | 300 mm | 11.81 inch | 560mm | 22.05 inch | 560mm | 22.05 inch |
| Working Holding | Spindle bore | 55 mm | 2.165 inch | 55 mm | 2.165 inch | 60mm | 2.36 inch | 85mm | 3.35 inch |
| | Max. bar capacity | 42 mm | 1.65 inch | 42 mm | 1.65 inch | 52mm | 2.05 inch | 78mm | 3 inch |
| | Spindle nose | A2-5 | | A2-5 | | A2-6 | | A2-6 | |
| | Chuck size | 6 inch | | 6 inch | | 8 inch | | 10 inch | |
| Performance | Spindle motor | 5.5 Kw | 7.5 HP | 5.5 Kw | 7.5 HP | 7.5 Kw | 10 HP | 11 Kw | 15 HP |
| | Spindle speed | 100 ~ 6000 RPM | | 100 ~ 6000 RPM | | 100 ~ 4000 RPM | | 100 ~ 3500 RPM | |
| | Rapid traverse (X, Z-axes) | 629 IPM | | 629 IPM | | 629 IPM | | 629 IPM | |
| Precision | Min. input unit | 0.0001 inch or 0.001 mm | | 0.0001 inch or 0.001 mm | | 0.0001 inch or 0.001 mm | | 0.0001 inch or 0.001 mm | |
| Tooling | Max. OD tool shank | 3/4 inch | | 3/4 inch | | 1 inch | | 1 inch | |
| | Max. boring tool diameter | Ø1 inch | | Ø1 inch | | Ø1 1/4 inch | | Ø1 1/4 inch | |
| Miscellaneous | Coolant pump motor | 1/4 HP | | 1/4 HP | | 1/4 HP | | 1/4 HP | |
| | Power requirement | 220v 3ph | | 220v 3ph | | 220v 3ph | | 220v 3ph | |
| | Machine size (L x W x H) | 2430x1270x1829 mm 96x50x72 inch | | 2430x1575x1829 mm 96x62x72 inch | | 3200x1854x1854 mm 126x73x73 inch | | 3200x1854x1854 mm 126x73x73 inch | |
| | Machine net weight | 1780 kg | 3924 lbs | 1880 kg | 4136 lbs | 3000 kg | 6613 lbs | 3180 kg | 7010 lbs |



CUBIC MACHINERY, INC.
13401 Benson Ave. Chino, CA. 91710

Tel 909 590-9995

Fax 909 590-9996

CubicMachinery.com

All illustrations and specifications contained in this brochure are based on the latest product information available at the time of printing. Cubic Machinery reserves the right to make changes at any time, without notice, in colors, features, equipment, specifications and models. Some models may be shown with optional equipment. While Cubic Machinery makes all reasonable efforts to provide accurate information in this brochure, there is no guarantee or warranty of accuracy. Furthermore, we do not assume any liability for the accuracy or completeness of information presented.

© 2013 Cubic Machinery, Inc. CUBIC, the CUBIC logo are trademarks and/or registered trademarks of Cubic Machinery, Inc. in the United States and other countries. All rights reserved. All company and/or product names are trademarks and/or registered trademarks of their respective manufacturers. Features, pricing, availability, and specifications are subject to change without notice.



AMT Machine Tools LTD.
Canadian Distributor

73 Galaxy Blvd. Units 16 & 17, Rexdale, Ontario - M9W 5T4
Office: 416-675-7760 | Fax: 416-675-6988
www.AMTmachine.com | sales@amtmachine.com